

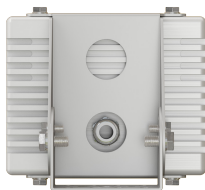
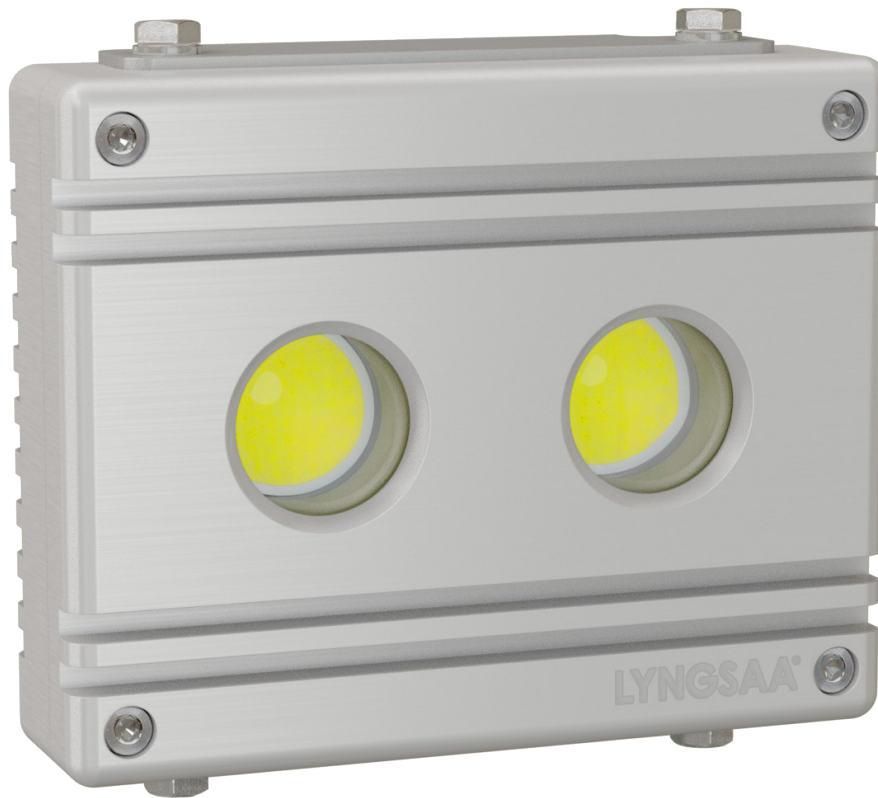
LYNGSAA®



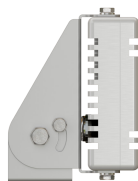
XTL 2 e

FOR EXTREME CONDITIONS

2017



BACK VIEW



SIDE VIEW



BRACKET

LYNGSAA FLOODLIGHT XTL 2 e has countless applications and utilizes the latest LED technology to ensure optimal task lighting in all conditions.



DURABLE

- Resistant to shocks and vibrations
- Resistant under extreme weather and working conditions



LONGEVITY

- State of the art LED and driver technology



LOW ENERGY CONSUMPTION

- Energy savings of approx. 80%



INDIVIDUAL SOLUTIONS

- Can be custom made with brightness up to 3020L

LYNGSAA®



**SOME PEOPLE ARE AFRAID
OF THE DARK
OUR COMPETITORS ARE
AFRAID OF THE LIGHT**

Floodlight - **XTL 2 e** is designed to be the work- and industrial lamp of the future.

The **XTL 2 e** is designed with the use of advanced 3D design tools and developed with state of the art LED and driver technology, which together with a rugged housing in marine grade anodized aluminium, ensures a long lasting product.

Equipped with high efficacy LEDs, enabling maximum light output with minimum heat generation, with an energy consumption reduction of 80%, compared with traditional halogen light sources, the LYNGSAA luminaires enable a very short return on investment.

The **XTL 2 e** can be implemented in all sorts of environments and industries, such as marine & offshore -, road -, agricultural -, harbor - and building sites, to mention a few.



LYNGSAA®



HIGH QUALITY MARINE & OFFSHORE LIGHTING SOLUTION

TECHNICAL SPECIFICATIONS

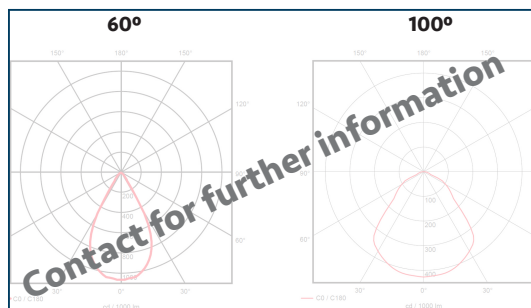
Item No.:	100430
Wattage:	22W
Voltage:	24 Volt DC
Beam angle:	60° /100°
Dimensions:	150 x 120 x 40 mm
IP rating:	IP67
Temp. range:	-35° to +50°C
Weight:	2.15 kg
Warranty:	5 years
(Also available for 100-277 Volt AC 50/60 Hz)	

LIGHT SPECIFICATIONS: KELVIN(K)/CRI, LUMEN(L)

	70 CRI	80 CRI	90 CRI	HIGH CRI
2700K	NA	2540L	2120L	1860L (97)
3000K	NA	2680L	2200L	2000L (97)
3500K	NA	2740L	2280L	2200L (93)
4000K	NA	2760L	2360L*	2370L (93)
5000K	3020L	2840L	2420L	NA

* Standard models

Technical specifications are calculated on data available from component manufacturers. Lumen/CRI/Kelvin are calculated before optical transmission.



MARINE GRADE ALUMINUM

- High quality surface treated aluminum
- Capable of withstanding marine environments

HIGH PERFORMANCE OPTICS

- Highest quality optical elements, made in Germany
- Specially developed for LED lighting modules
- High efficiency light output

BRIDGELUX LED

- High quality Bridgelux elements selected in co-operation with Bridgelux specialists.



MEAN WELL DRIVER

- High quality drivers from MeanWell, a world leading power supply provider
- High performance and lifetime

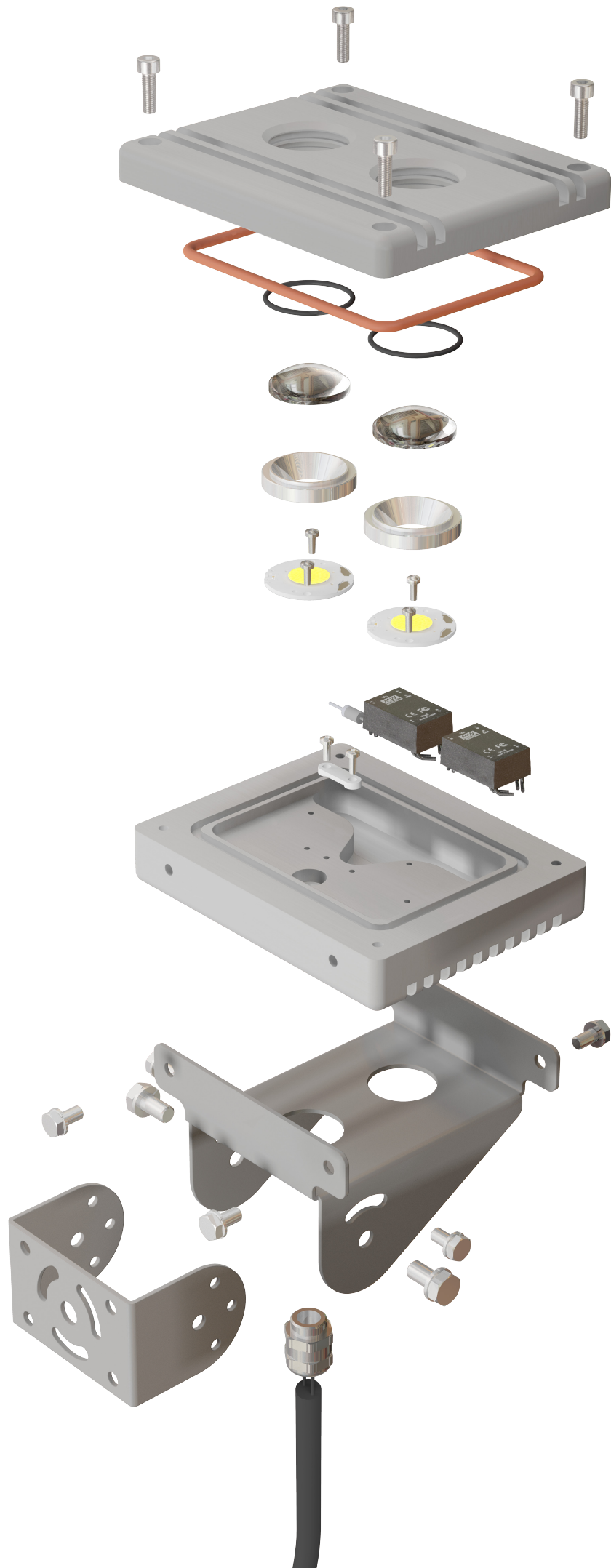
CABLE GLAND

- M16 x 1.5, nickel-plated brass as standard*

HIGH QUALITY CABLE (included as standard*)

- H07RN-F heavy duty Harmonized cable
- Robust, but still extremely flexible
- PCP neoprene; oil and flame retardant

*Cabling and Cable Gland options can be provided as per request.



LYNGSAA®

Mission

Our goal at LYNGSAA is to be the leading, global innovator of high-end lighting solutions for extreme environments, providing our customers outstanding illumination and superior service.



Torben Laustsen

LYNGSAA A/S

Nordvej 11
DK-9900 Frederikshavn
Denmark

CVR: 38 15 41 33
Email: info@lyngsaa.eu
Web: www.lyngsaa.eu
Phone: +45 98 46 92 70

